



Educational Arts 2025

loganarts.com.au

Supported by



Message from the Mayor



The City of Logan is the youngest, most diverse and fastest growing city in Queensland. As Mayor, it is my job to fly the flag for our city, letting everyone know about the talented people who live here and the amazing opportunities available.

This inspiring program of educational arts offerings for students is designed to share the joy of performing arts with students in our young city. Our Council is committed to supporting local arts venues and making it easier for students to access these experiences. We also provide complimentary transport bookings to help schools access local performances.

I encourage all teachers to embrace this wonderful arts program and include it in your learning calendar. Let's inspire the young people of Logan together.

Mayor Jon Raven, City of Logan



Acknowledgement of Country

Logan City Council respectfully acknowledges the Traditional Custodians of the lands and waterways across the City of Logan. They hold the memories, traditions, cultures and hopes of Australia's First Peoples.

Aboriginal and Torres Strait Islander people are advised that this publication contains names and images of deceased people. In complying with cultural protocol, permission has been sought and granted from the families of these individuals to show these stories in this publication.

Image: Kalkadoon artist Colleen Sam (Ngungernnumma), Logan City: All cultures coming together (detail)

Logan Arts Special Offer

Visit any of our arts venues and book a workshop, performance or tour to receive complimentary transport.

Buses are provided with support from Express Coach Lines

See a show at



LOGAN
ENTERTAINMENT
CENTRE

or



KINGSTON
BUTTER
FACTORY

or book a free guided tour or workshop at



LOGAN ART
GALLERY

or



LIVING
MUSEUM
OF LOGAN

First
10 Bookings
Receive
FREE* bus
transport

* Subsidised bus rates may be available once the complimentary buses have been exhausted.

If transport is an issue for your school, please contact the team at entertainment@logan.qld.gov.au. This offer is only available for Primary and Secondary School groups. **Minimum 25 students.** 1 complimentary teacher theatre ticket for every 10 student theatre tickets purchased.

* LIMITED AVAILABILITY

EXPRESS
COACH LINES



How to book a theatre performance

Step 1

COMPLETE THE LOGAN ARTS BOOKING FORM

Please complete and submit the form via QR code or call 3412 5626 to make your booking. Bookings are made in strict order of receipt from the online school booking form.



Step 2

CONFIRMATION AND INVOICING

We will reserve your theatre performance and invoice the school. You can request changes to student numbers up to 4 weeks prior to the theatre performance (subject to availability). Student theatre tickets are discounted at \$15 per student (unless otherwise specified). Teachers/ carers receive complimentary theatre seating on a 10:1 ratio. Gallery and museum guided tours are free.

Step 3

BUS BOOKINGS

The Logan Arts team will liaise directly with the bus providers. A confirmation number will be sent to the school if any issues arise on the day of travel.

Step 4

PAYMENT

Full payment is due a minimum of 4 weeks prior to the theatre performance date. At this stage student numbers are final. Theatre bookings cannot be held if your final payment is not received by the due date and the reservation will be released. An increase of numbers is possible after the final payment day and is subject to theatre seating availability.

Step 5

FINAL CONFIRMATION SENT TO SCHOOLS

A confirmation letter will include your theatre seating allocation and gallery or museum guided tour booking information.

Step 6

ATTEND AND ENJOY!




Schools will be asked to enter the theatre as a group. We advise arriving at the theatre venue approximately 30 mins prior to your performance. Your friendly gallery or museum tour guide will greet teachers and students at the start of your booked tour.

If you have concerns, please contact the Box Office on **07 3412 5626**.
For after-hours information email entertainment@logan.qld.gov.au

How to book a free exhibition tour or workshop

Follow these steps to book at the Living Museum of Logan or Logan Art Gallery:

Tour/workshop venue capacities per hour

- >  **LOGAN ART GALLERY** – 60 students
- >  **MAYES COTTAGE** – 60 students
- >  **LIVING MUSEUM OF LOGAN** – 60 students

Step 1

COMPLETE THE ONLINE BOOKING FORM

Please complete and submit this form via QR code to the right.



Step 2

CONFIRMATION

The relevant tour/workshop organiser will confirm the booking within 1 week of the form submission. The provider may call to discuss potential workshops or tour options.

Bookings will be confirmed on a first in, first served basis.

Step 3

BUS BOOKINGS

The Logan Arts team will liaise directly with the bus providers. A confirmation number will be sent to the school if any issues arise on the day of travel.

Step 4

ATTEND AND ENJOY!

Welcome to the City of Logan's fantastic arts and cultural venues. Your friendly gallery or museum tour guide will greet teachers and students at the start of your booked tour.

If you have concerns or questions about tour/workshop opportunities, please email the relevant operator:

Logan Art Gallery – artgallery@logan.qld.gov.au

Living Museum of Logan – livingmuseum@logan.qld.gov.au

 TERM 2 - PRIMARY

DRAMA



The Twits

Wednesday 30 April 2025

Roald Dahl's gruesome twosome, *The Twits*, arrive to delight and disgust, in equal measure. Mr and Mrs Twit are the nastiest couple you could ever hope (not) to meet. Both are on a quest to be meaner than the other – but, is there someone out there who can out-twit the Twits? Full of trickery and wickedly-funny pranks, **Dahl's** adored classic encourages us to treat others with love and care and proves that if you have good thoughts, they will shine out of your face like sunbeams.

Packed with Dahlicious mischief, hilarious mayhem and big belly laughs, *The Twits* is unmissable theatre for all ages. You won't believe your (glass) eye!

Time

10:30 am and 12 noon

Duration

50 minutes, no interval
+10 min post show Q&A

Venue

Kingston Butter Factory -
Butterbox Theatre

School ticket prices

Student: \$15
Teachers/carers: One free
ticket per 10 paying students

Audience

Grades P to 6

Warnings

Two very nasty individuals
and bathroom humour

Links to the Australian Curriculum (ACiQ Ver 9):

- > **English:** Storytelling, Poetry, Imagination, Transformation of Text, Language, Literature
- > **Drama:** Performance techniques, Visual Theatre, Magical Realism, Creating and Making, Exploring and responding, Developing practices and skills
- > **General Capabilities:** Critical and creative thinking, Ethical understanding, Personal and social capability

Themes/issues:

- > Creativity
- > Humour
- > Resilience

Style/genre:

- > Story-telling
- > Children's Theatre
- > Magical Realism
- > Transformation of Text
- > Ensemble Theatre
- > Poetry

Elements of drama:

- > Role
- > Tension
- > Language
- > Movement
- > Focus
- > Mood
- > Narrative

Conventions/styles:

- > Multiple-role
- > Comedy
- > Stage Craft
- > Satire
- > Non-human characters
- > Time and Place shifts
- > Puppetry

Presented by Shake & Stir Theatre Company and Kingston Butter Factory.



Queensland
Government



TERM 2 - SECONDARY

INDIGENOUS PERSPECTIVES



Time

11 am

Duration

60 minutes, no interval
+10 min post show Q&A

Venue

Kingston Butter Factory -
Butterbox Theatre

School ticket prices

Student: \$15
Teachers/carers: One free
ticket per 10 paying students

Audience

Grades 7 to 12

Warnings

- > Low-level coarse language
- > Use of racially prejudiced language
- > References to gun violence
- > Use of replica firearms
- > Haze effects

Crossing the Divide

Thursday 8 May 2025

A high school history class sets out on a two-day trek across the Great Dividing Range, learning about the expedition by Blaxland, Wentworth and Lawson. As the group travel through the Blue Mountains, their guide Lionel draws their attention to what is often left out of the history books. They learn about some of the earliest interactions between Indigenous people and the colonial explorers, revealing some of this nation's difficult truths.

As the trip continues, Liam, a scholarship student from the Torres Strait, starts to feel uncomfortable, constantly having to declare or defend his experience as a First Nations person to his classmates. Tensions mount when Liam's friend Max refuses to see how European settlement created anything but a positive pathway to progress for a newly forming nation. Tempers flare around the camp fire and Liam becomes lost – in time and place - as he's suddenly staring down the barrel of a shot-gun held by an equally startled and confused Gregory Blaxland.

The physical landscape of the Great Dividing Range serves as an allegory for the pertinent issues that Australia is grappling with and the divide between various parts of our society. *Crossing the Divide* asks the question, "Can we find a path to a more unified Australia, or is the distance too vast to cross and will we always be divided?"

Crossing the Divide premiered in March 2024 and is written and performed by **Sam Foster**, **Hayden Jones** and **Benjin Maza**, with sound design and composition by **DOBBY**.

Presented by Shock Therapy Arts and Kingston Butter Factory.

Shock Therapy Arts is proudly supported by the City of Gold Coast



Links to the Australian Curriculum (ACiQ Ver 9):

- > The Arts: Drama and Music
- > HPE – Relationships
- > History – Deep Time History of Australia, Making and Transforming the Australian Nation

Cross-curriculum Priorities:

- > Aboriginal and Torres Strait Islander Histories and Culture

Themes/issues:

- > Australian History
- > First Nations Perspectives
- > Colonialism
- > Power and Class
- > Division
- > Identity
- > Politics
- > Mateship
- > Indigenous Voice
- > Aboriginal Culture
- > Racism and Reconciliation
- > Relationships
- > Empathy
- > Bystander Effect

Style/genre:

- > Direct address
- > Magic realism
- > Narration
- > Monologue
- > Multiple role-playing
- > Mime
- > Live music
- > Slow motion
- > Flashbacks/flash forwards

Elements of drama:

- > Role, character, and relationships
- > Voice and movement
- > Focus
- > Tension
- > Space and time
- > Language, ideas and dramatic action



TERM 2 -
SECONDARY

EXCURSION



H/W

Jones

PRODUCTIONS



Queer & Here

Friday 27 June 2025

Queer & Here is a school excursion for 12–17 year old LGBTQIA+ kids and allies which aims to empower young people by providing environments where they can freely express themselves, form supportive relationships, and build confidence in their identities.

Across the event, attendees get to experience thrilling performances from a range of different drag queens, engage in fun activities like drag bingo and storytime readings, and engage in a Q&A session with the cast where they discuss topics or burning questions relevant to them.

Recognising the unique challenges faced by LGBTQIA+ youth, *Queer & Here* creates opportunities for these young individuals to connect, learn, and thrive in a welcoming community. Our events focus on fostering inclusivity, creativity, and joy. Since its founding in 2020 *Queer & Here* has had over 1000 kids attend the events.

Queer & Here is committed to creating a world where LGBTQIA+ youth feel seen, heard, and valued. Through our events and partnerships, we strive to build a community where every young person can be their authentic self. This is the first time *Queer & Here* has been held in Logan though support from Kingston Butter Factory and Logan City Council.

Time

9 am to 3 pm

Duration

Full day event

Venue

Kingston Butter Factory -
Butterbox Theatre

School ticket prices

Student: \$15

Teachers/carers: One free
ticket per 10 paying students

Audience

Grades 7 to 12

Event includes:

- > Live performances from a range of SEQ's best drag queens
- > Games and storytime
- > Question and answer sessions
- > Interaction and network building
- > Engagement with community support services

Students can either bring their own lunch or money to purchase food from onsite vendors.

Presented by Kingston
Butter Factory.





TERM 3 - PRIMARY

CHILDREN'S THEATRE



IMAGINE LIVE

by Jolyon James based on the book 'Imagine' by Alison Lester.

Produced by Jolyon James and NCM.

Wednesday 27 August 2025

IMAGINE LIVE reminds us that creativity is a muscle that loves to be stretched; It not only lifts us up but holds us on the way down. We know that with the help of your imagination, creativity builds smart and resilient human beings and we need them now more than ever. IMAGINE LIVE challenges young audiences to dream themselves out into the world and see themselves as part of a vast connected space. The show transforms thoughts and ideas into exciting destinations where distance is only as far as the turning of a page and no matter how far you travel you will always be home.

Exploring themes around creativity and the natural world IMAGINE LIVE is an innovative, interactive and exciting show that will inspire audiences to see the world around them in new and surprising ways.

IMAGINE LIVE combines live action and animation, oscillating between **Alison Lester's** iconic natural environments and the playful home setting of the children. Underscored by beautiful original music, oversized props and digital puppets are skillfully brought to life by live performers. Song and play link together a long distance video call between a granddaughter and grandmother, enjoying a nostalgic connection through their favourite book, Imagine.

Time

11 am

Duration

50 minutes, no interval
+10 minute Q&A

Venue

Logan Entertainment Centre

School ticket prices

Student: \$15
Teachers/carers: One free ticket per 10 paying students

Audience

Grades P to 6

Details

Social Story/Visual Story Guide/Sensory Guide is available.

Pre-Show Touch Tours available upon request.

Links to the Australian Curriculum (ACiQ Ver 9):

- > The Arts: Drama, Visual Art, Music
- > Science
- > Technology
- > English

Themes/issues:

- > Resilience through Creativity
- > Play and Imagination
- > Environmental Protection
- > Biodiversity / Animals
- > Connecting with Nature
- > Intergenerational relationships
- > Storytelling

Elements of drama:

- > Role
- > Relationship
- > Focus
- > Voice
- > Movement
- > Space Time
- > Mood
- > Creativity

Conventions/styles:

- > Projection/technology
- > Interactive digital
- > Puppetry
- > Traditional puppetry
- > Original music
- > Recorded and live performances
- > Animation





TERM 2 - SECONDARY

IMMERSIVE DRAMA



The Scene Project Outcome Day at Kingston Butter Factory, 2023

Queensland Theatre's The Scene Project

Wed 3 & Thu 4 September 2025

The *Scene Project* is Queensland Theatre's largest Education offering, encouraging drama students throughout the state to engage in the creative process of performance, from rehearsal through to presentation.

Each year a playwright pens a new work and the participating drama groups are tasked with the challenge of creating their own unique 15-minute version of the play. During the rehearsal phase, Queensland Theatre artists visit the participating schools to facilitate workshops.

The *Scene Project* is about collaboration, acknowledging students and teachers as artists, building confidence and encouraging live performance in a professional space and manner. It is also an excellent way of participating in professional development and enhancing existing curriculum in schools.

The project concludes with local schools coming together at the Kingston Butter Factory to share their performance in the Butterbox Theatre. On this day, a cast of professional Queensland Theatre actors also present a full interpretation of the play under the same 'minimalist' parameters set for the schools, providing young artists and their teachers with new ways of making and shaping texts that can be taken into their classrooms.

The final stage of the project is a learning forum that allows for students to acknowledge the skill and artistry of their peers as well as engage in robust discussions around process and performance building.

Time

9 am to 3 pm

Duration

Full day event

Venue

Kingston Butter Factory -
Butterbox Theatre

School ticket prices

The Scene Project is a per school fee of between \$600 and \$1100 +GST and will be set by Queensland Theatre

Audience

Grades 7 to 12

Links to the Australian Curriculum:

- > ACiQ Ver 9 – The Arts
 - > Years 7–8 Band Drama
 - > Years 9–10 Band Drama
- > General Drama:
 - > Unit 1: Share
 - > Unit 2: Reflect
 - > Unit 3: Challenge
- > Drama in Practice

Styles & Conventions including but not limited to:

- > Magic Realism
- > Absurdism
- > Satire
- > Episodic, non-linear form
- > Contemporary performance conventions eg. hybridity
- > Direct Address
- > Multiple role-playing

To register your interest, please fill out the online Expression of Interest form. Queensland Theatre will be in touch directly when applications open in Term 4.



Presented by Queensland Theatre and Kingston Butter Factory.

**QUEENSLAND
THEATRE**





TERM 3 - SECONDARY

STUDENT ART



Artwaves 2023,
installation image

Artwaves 2025: Logan and adjacent areas secondary schools art exhibition

8 September to 8 November 2025

Artwaves is a major annual art exhibition of artworks sourced from the creative and talented high school students from the City of Logan and adjacent areas.

Now in its 33rd year *Artwaves 2025* continues to recognise, promote, and celebrate the creative excellence of young artists in the region. It also acknowledges the important contribution made by teachers and parents in nurturing these students' creativity. Artworks in this exhibition are selected by the *Artwaves 2025* Committee comprising Logan Art Gallery staff and visual art teachers from participating schools. Artworks in this exhibition have been created by students from grade 7 to grade 12. This year the exhibition showcases the work of over 150 different students. This year the exhibition brings together student artworks from over 31 secondary schools in the Logan region.

Time

Open Tuesday to Saturday
10 am to 5 pm

Venue

Logan Art Gallery

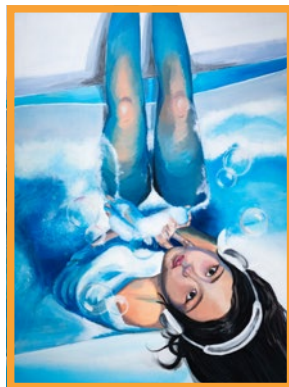
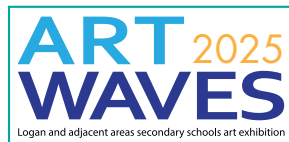
Cost

Free.

Self-guided tours are encouraged at Logan Art Gallery. Please contact the Gallery to let the team know of your planned visit so that we can ensure that your visit does not clash with other activities or events.

Audience

Grades 7 to 12



Yolanda (Yuelin) Wang, Calamvale Community College, year 12, *Indulge*, 2023, acrylic on canvas





TERM 4 - PRIMARY

COMEDY MUSICAL

ProudFoot + Friends



Proudfoot and Friends

Thursday 23 October 2025

Get ready for the foot-stomping, rib-tickling, toe-tapping time of your life at the **Proudfoot & Friends** stage show spectacular!

Join award-winning children's performer **Lucas Proudfoot** on a non-stop musical adventure around Pelican Bay.

This groundbreaking comedy-musical features choreographed animated projections that delight and captivate little ones (and big ones!) as Lucas leads them on a hilarious interactive sing-along adventure. So come on down to Pelican Bay and join **Proudfoot & Friends** for story time like you've never seen it before!

Time

10:30 am

Duration

45 minutes, no interval

Venue

Kingston Butter Factory -
Butterbox Theatre

School ticket prices

Student: \$15
Teachers/carers: One
free ticket per 10 paying
students

Audience

Grades P to 3

Links to the Curriculum (ACiQ Ver 9):

- > The Arts: Drama, Music
- > English

Cross-curriculum priorities:

- > Aboriginal and Torres Strait
Islander Histories and
Culture

Themes/issues:

- > Indigenous Australian
Culture and History
- > Multicultural diversity
- > Creativity

Elements of drama:

- > Role
- > Relationship
- > Focus
- > Voice
- > Movement
- > Space

Conventions/styles:

- > Projection/Technology
- > Interactive Digital
- > Puppetry
- > Live Music
- > Recorded and live
performances
- > Animation



Presented by Kingston
Butter Factory.





TERM 1 & 2 - ALL AGES

EXHIBITION



Two times winner of the BMX freestyle national titles
Kayla McCormick

Progression Playground: BMX Freestyle in Logan

On display until July 2025

The sport, culture, and industry of BMX freestyle has evolved through the DIY (Do-It-Yourself) ethos that embodies urban street culture and the ingenuity of creating something from nothing. Freestyle riders push the boundaries of what is possible on a bike without the conformity and rules of traditional sports.

The true definition freestyle is being in the moment. To be free and to do what you want to do without judgement or criticism. It is this freedom that has enabled freestyle to be not only a sport, but a way of living. Freestyle allows for constant evolution both individually and collectively.

Progression Playground highlights the evolution of Logan's BMX freestyle scene from the early years to today's new generation of riders. This exhibition shines a spotlight on the essence of the sport, tied together by community and self-expression. This Rider Owned – Rider Run ethos has allowed freestyle in Logan to be one of the world's most progressive playgrounds.

Time

Tuesday to Saturday
10 am to 4 pm

Duration

On display until July 2025

Venue

Kingston Butter Factory -
Living Museum of Logan

School ticket prices

Free entry

Audience

Grades 9 to 12



Tim Newton, Steven Smith and Troy Newton, 1988.
Photo: Steven Smith

Big Sculpture Showcase

29 January–22 March 2025
(Primary & Secondary Students, Visual Arts)

Big Sculpture Showcase is a new initiative of the *Cairns Indigenous Art Fair* featuring large-scale sculptural art works from emerging and established artists from across Queensland. The exhibition celebrates traditional and contemporary approach to First Peoples' art and cultural expressions; stories, design elements, motifs, symbolism, and imagery that is unique to Queensland.

Big Sculpture Showcase is supported by the Queensland Government through Arts Queensland as part of the Arts and Cultural Recovery Package – Spaces and Places. An initiative of the Cairns Indigenous Art Fair.

This project is supported by the Regional Arts Development Fund, a partnership between the Queensland Government and Logan City Council to support local arts and culture in regional Queensland.



Alma Norman, Marlene Norman, Mavis Benjamin, Jumping Barramundi, 2022, ghostnet, rope, twine, steel frame.
Photograph: Michael Marzik

Nicola Hooper: Animalis humanum

26 March–17 May 2025 (Grades 10 to 12, Visual Arts)

Inspired by the text 'Becoming Animal' by Hatje Cantz, *Animalis humanum* explores the hybrid human animal. This immersive exhibition will draw its aesthetic from science and a circus 'side show'; reflecting the isolation that is derived from being or becoming an infected or afflicted individual. This collection of curiosities will enthrall and stimulate dialogue on our perception of where we fit in the natural world.

Dr Nicola Hooper's studio practice explores the traditional storytelling through printmaking, drawing and mark-making. **Hooper's** work investigates human/animal relationships, particularly the transmission of Zoonoses.

This project is supported by the Regional Arts Development Fund, a partnership between the Queensland Government and Logan City Council to support local arts and culture in regional Queensland.



Kyra (detail), 2024, 120cmx 98cm, photography, lithography and watercolour

Christina Lowry: Ex Libris

16 July–6 September 2025
(Grades 10 to 12, Visual Arts)

In the exhibition *Ex Libris* **Christina Lowry** presents a new series of photographic work inspired by animal conservation, taxidermy, museology and the still life tradition. *Ex Libris* invites visitors on a visual journey that celebrates the beauty of endangered birds while emphasizing the urgency of their conservation. Through the lens of photography, this exhibition seeks to inspire empathy, provoke reflection, and spark action in safeguarding these birds for future generations. The works will include birds endangered in the Logan area such as the Australasian Bittern, Australian Painted Snipe, and the Marbled Frogmouth.

This project is supported by the Regional Arts Development Fund, a partnership between the Queensland Government and Logan City Council to support local arts and culture in regional Queensland.



Rara Avis (Rare Bird) (detail), 2023, Giclee pigment ink print on Hahnemuhle Photo Rag 100% cotton 308gsm paper, edition of 5

Joe Furlonger: Horizons

12 November 2025–18 January 2026
(Grades 10 to 12, Visual Arts)

Joe Furlonger is one of Australia's most respected painters and is a nine-time Archibald Prize finalist. He came to prominence in the late 1980s with a series of large-scale figurative paintings that employ a highly physical method of art making by combining swathes of colour and vigorous sweeps of the brush. While figuration has long been intuitive to him, **Furlonger's** more recent compulsion is to capture the many moods of the Australian landscape.

QAGOMA
TOURING

The Queensland Art Gallery | Gallery of Modern Art provides a program of touring exhibitions and related services to regional Queensland.



Joe Furlonger in his Samford studio, 2022
Photo: Joe Ruckli © QAGOMA

Logan Art Gallery Tours and Workshops

Inspire your student with creativity at Logan Art Gallery

Logan Art Gallery provides free educational activities for primary and secondary schools. Activities include self-guided tours, guided tours and hands on creative workshops inspired by the current exhibitions on display. Our team can also tailor the exhibition inspired experience for you and your students.

Self-Guided Tours

Self-guided tours are encouraged at Logan Art Gallery. Please contact the Gallery to let the team know of your planned visit so that we can ensure that your visit does not clash with other activities or events. Any available educational resources for exhibitions on display will be provided for self-guided tours.

Audience

Grades 1 to 12

Guided Tours

Join our Gallery team for a fun and informative guided tour of the exhibitions on display at Logan Art Gallery. These interactive tailored tours unpack art theory in an exciting and age-specific way to give an in-depth insight into the exhibition.

Duration

1 hour

Audience

Grades 1 to 12





Photo: Marty Pouwelse

Exhibition-based Workshops and Tours

Inspire your students with a hands-on creative workshop and exhibition tour. The Galley team can provide exhibition-inspired creative workshops in various mediums including painting, drawing, sculpture and printmaking. These custom-made sessions can accommodate your students and help to create a dynamic excursion and engaging art experience.

Duration

2 hours (30 minute Gallery tour, 90 minute workshop)

Audience

Grades 1 to 12



Meet The Artist

Inspire your senior students by meeting contemporary artists at Logan Art Gallery. In this bespoke program senior students meet an exhibiting artist at the Gallery. The program provides informal discussions about the exhibitions, and it is a chance for students to gain an in-depth understanding of the artists practice and the art making process.

Audience

Grades 11 and 12

How to book

Bookings are essential for all Logan Art Gallery tours and workshops. Contact us to discuss suitable dates and times.

Please book online:
loganarts.com.au/tour-school-group-booking



Living Museum of Logan Tours

Explore the stories of Logan with your students.

The Living Museum of Logan is a place to experience the stories of Logan's diverse communities. It is a place where you can hear, see, and read stories from the people who have made the City of Logan what it is today. Displays in the museum acknowledge the city's past, illuminate the present and help imagine the future.

Self-Guided Tours

Self-guided tours are encouraged at the Living Museum of Logan. Please contact the Museum to let the team know of your planned visit so that we can ensure that your visit does not clash with other activities or events. Any available educational resources for exhibitions on display will be provided for self-guided tours.

Guided Tours

Join our museum team for a fun and informative guided tour of the exhibitions on display at the Living Museum of Logan. These interactive tailored tours unpack storytelling, art, and cultural expression in an exciting and age-specific way.

Behind-the-scenes Guided Tour

If you're booking a tour of our exhibitions, also consider joining us for a fun and informative look behind the scenes of a working cultural precinct/theatre.

How to book

Bookings are essential for all Living Museum of Logan tours. Contact us to discuss suitable dates and times.



Please book online:

loganarts.com.au/tour-school-group-booking

Time

Tuesday to Saturday
10 am to 4 pm

Duration

Guided Tours: 1 hour

Venue

Kingston Butter Factory -
Living Museum of Logan

School ticket prices

Free entry

Audience

Grades 1 to 12

Aboriginal and Torres Strait Islander people should be aware that displays may contain names, images and voices of deceased people. In complying with cultural protocol, permission has been sought and granted from these individuals and families to show these stories in this space.



First Nations space

This space is co-curated with, by and for Logan's Aboriginal and Torres Strait Islander people. Visitors can learn about First Nations' languages and culture, and hear digital stories from Logan's Elders.

- ***Our Aunties and Uncles*** records the stories of 4 significant Elders in Logan in their own voices.
- ***Our words our stories*** are by Aboriginal and Torres Strait Islander people who live, work or perform in Logan City.
- ***Wajin: The Guardian of Scrubby Creek*** by Beverley and Reginald (Uncle Reg) Knox. Visitors can listen to this children's story narrated by Missy Knox, daughter of Uncle Reg Knox.

These projects were generously supported by several organisations. Visit: logan.qld.gov.au/aboriginal-torres-strait-islander-services for more detail

Image top: First Nations space, Living Museum of Logan

Image right: Beverley Knox (left) and Reginald (Uncle Reg) Knox (middle) Missy Knox (right) at Scrubby Creek

Venue: Living Museum of Logan within the Kingston Butter Factory main building





ALL YEAR - ALL AGES

LOCAL HERITAGE



Mayes Cottage: Guided Tours

**Open to the public:
Thu, Fri & Sat, 10:30 am to 4 pm**

Step back in time and visit historic Mayes Cottage, a reminder of Queensland's pioneering age. The cottage was built in 1887 and is virtually unchanged. Enjoy the calm and relaxing atmosphere with a picnic or share a yarn on the verandah with our friendly volunteer guide.



Time

School tours are available on Thursdays, 10:30 am to 4 pm.

Self-guided tours are available on Fridays, 10.30 am to 4 pm

Venue

Mayes Cottage House Museum

School ticket prices

Free entry, but bookings are essential. Please book online:



[loganarts.com.au/
tour-school-group-booking](https://loganarts.com.au/tour-school-group-booking)

Audience

Grades 1 to 12
Primary/Secondary school groups



Visitor information

Logan City Council is committed to providing access to quality educational arts experiences for all students. This includes students with disability and special needs. Interpretation services in Auslan and languages other than English can be provided to visitors on request. Please contact us about your interpretation needs before your visit.

Logan Entertainment Centre

Parking

Accessible parking is available with 6 designated spaces at the front of the Logan Entertainment Centre building and 3 designated spaces at the back of the building. Please ensure your pass is clearly displayed when parking in these spaces.

Mobility assistance

Our theatre provides seats for those who use wheelchairs or have other mobility concerns. Please notify us if your booking requires wheelchair access so we can be prepared to best accommodate you on the day.

The centre has ramp access down to the main entry to assist people in a wheelchair or parents with prams. Our foyer and corridors are of sufficient width to fit wheelchairs and prams. Lift access to the balcony seating area from the foyer allows for easy and safe access between levels.

Hearing assistance

LEC has PA amplification suitable for people with hearing aids. If required, individual radio devices for hearing amplification can be accessed free of charge from the Box Office.

PWD bathrooms

PWD bathrooms are available in the Logan Entertainment Centre building.



Logan Art Gallery

Parking

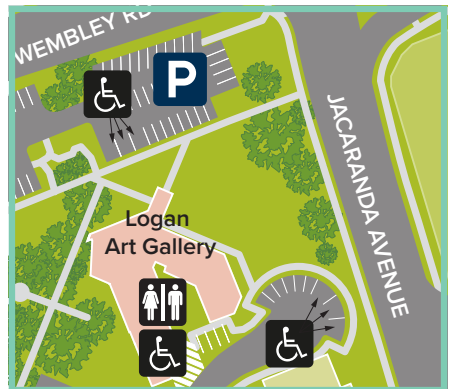
There are 3 accessible parking spaces at the front of the Logan Art Gallery building. Please ensure your pass is clearly displayed when parking in these spaces.

Mobility assistance

The gallery foyer and corridors are wide enough to fit wheelchairs and prams.

PWD bathrooms

Toilet facilities and an accessible bathroom are available at the gallery.



Kingston Butter Factory and Living Museum of Logan

Parking

Accessible parking is available at the Kingston Butter Factory/Living Museum of Logan, with 4 designated spaces at the front of the car parking area. Please ensure your pass is clearly displayed when parking in these spaces.

Mobility assistance

All precinct venues are accessible. There is ramp access to the Outdoor Stage and Café.

The Butterbox Theatre offers accessible seating for patrons who use wheelchairs or have other mobility concerns. If you wish to access these please advise the box office at time of booking.

Hearing assistance

All spaces within the precinct are equipped with hearing loop assistance.

PWD bathrooms

PWD bathrooms are available inside the Kingston Butter Factory building, as well as next to Devon Pixies Tearoom and the Heritage Centre. A Changing Spaces accessible bathroom can be found on the ground floor within the KBF building.

Hush room

The Hush Room is attached to Butterbox Theatre and provides a calming, relaxing space for people experiencing difficulty processing sensory information.



Mayes Cottage

Parking

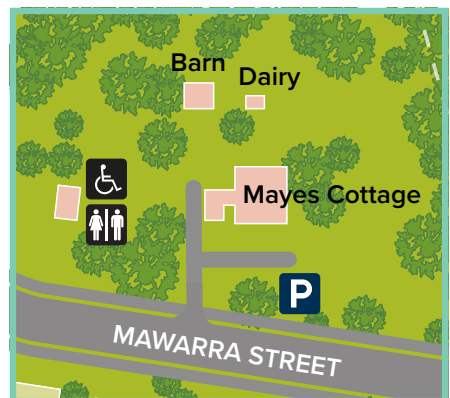
Small buses can park on the property, large buses should use the designated bus drop off area on the road at the front of Mayes Cottage.

Mobility assistance

There is no wheelchair access to the cottage, as it is heritage listed and the site cannot be altered. There are 4 sturdy steps with a thick railing into the cottage.

PWD bathrooms

Toilet facilities are available on site, including an accessible toilet.



Accessibility

Our venues aim to be accessible, inclusive and safe providing a range of facilities that cater to people of varying abilities. For detailed information on access to each of our venues visit the accessibility page on our Logan Arts website: loganarts.com.au/accessibility

Kingston Butter Factory accessibility

Kingston Butter Factory (KBF) has advanced accessibility features. For detailed information on KBF's accessibility features and capabilities, visit the KBF Access and Inclusion page on Logan Arts: loganarts.com.au/kbf-access-and-inclusion. Here you can also access a link to the *Cérge* Companion website and access a sensory guide and virtual tour of KBF.



Cérge App

The *Cérge* Companion Website is a collection of tools, guides, sensory descriptions, and virtual tours. If you have a disability this is a good way to "Know Before You Go" about accessibility features of the venue.



KBF also communicates to visitors via the *Cérge* Companion App so if you are living with a disability, you can provide staff with "About Me" information ahead of your visit so staff are aware of your specific needs.



Mobility assistance

All KBF precinct venues are accessible. There is ramp access to the Outdoor Stage and Devon Pixies Tea House Café.

The Butterbox Theatre offers accessible seating for patrons who use wheelchairs or have other mobility concerns. If you wish to access these please advise the box office at time of booking.



Hearing assistance

All spaces within the precinct are equipped with hearing loop assistance.



Hush room

The Hush Room is attached to Butterbox Theatre and provides a calming, relaxing space for people experiencing difficulty processing sensory information.



PWD bathrooms

PWD bathrooms are available in the Kingston Butter Factory building; the café; and the Heritage Centre. A **Changing Spaces** accessible bathroom can be found on the ground floor within the KBF building.



Please feel free to contact the KBF box office on 3412 5626 and let us know how we can make your visit more comfortable.

Theatre etiquette

For some students this may be their first experience with live theatre. For many, this can be very exciting and we want you and your students, as well as all the other patrons coming to the theatre, to have the best theatre experience possible. If it is likely that your students are unfamiliar with general theatre etiquette (or even if they are and might need reminding) we strongly suggest going over it with them in preparation for your excursion, and discussing why the following things are important.

Mobile phones

Phones should be switched off while in the theatre. Generally, photography and video recording of performances is not allowed unless an announcement has been made prior to the show.

Refreshments

Food or drink is allowed into performances, but should be consumed discreetly and all rubbish should be disposed of in the bins provided. Refreshments are available at our kiosk.

Bags and prams

Bags and prams are not permitted into our theatre/auditorium. Staff will arrange storage for these items on request.

Indoor voices

Responding to and interacting with the performers on stage in an appropriate way is encouraged, but talking loudly during inappropriate moments or in ways that may disturb other patrons is strongly discouraged.

Teacher Advisory Board

These are exciting times for the performing arts in Logan! With the expansion of Logan Arts offerings and an all-new education program that delivers great educational theatre, interactive performances, and workshops right here in the City of Logan.

Our teacher advisory group meets twice a year and offers educators the chance to help guide our programming; network with fellow teachers; and meet the performance artists.

Session times for 2025 are still to be confirmed.

Email laurabonner@logan.qld.gov.au if you are interested in attending.



Our Venues



The Logan Arts venues are only a 5 minute drive from each other. They are conveniently located half way between Brisbane City and the Gold Coast and can be reached within 45 minutes from those regional centres.

Logan Art Gallery

The gallery showcases artworks by local artists of all nationalities including Aboriginal and Torres Strait Islander and culturally diverse artists, as well as major touring exhibitions. Free practical art workshops are run in our dedicated studio space and interactive activities are available in the Young Peoples Gallery.

Logan Entertainment Centre (LEC)

The LEC is a fully air-conditioned, multi-purpose venue featuring a large Auditorium with tiered or flat floor seating; a permanent stage; audio and lighting infrastructure; meeting rooms and a professional kitchen. The LEC is perfect for professional and amateur productions, award nights, gala dinners, conferences, fundraisers and more.

Mayes Cottage

Mayes Cottage was built in 1887 and is virtually unchanged. Now a house museum, it is a reminder of Queensland's pioneering age. Free and open to everyone. Tours with our friendly volunteer guides are available.

Kingston Butter Factory (KBF)

Logan's newest cultural precinct, KBF has a range of versatile indoor and outdoor spaces including a large Outdoor Stage area, open Plaza, Indoor Studio, Butterbox Theatre, Atrium, and function/meeting rooms. These spaces can accommodate various events, ranging from large outdoor concerts to smaller scale events. The precinct also includes a Heritage Centre and Cafe.

Living Museum of Logan

Located in the main KBF building, the spaces of the Living Museum of Logan provide a changing program of displays co-curated by Logan's community and museum staff. Hear, see and read stories from the people who have made the City of Logan what it is today.



**Corner Wembley Rd and Jacaranda Ave,
Logan Central**

- > Open Tue to Sat, 10 am to 5 pm
- > FREE entry



170 Wembley Rd, Logan Central

- > Open Mon to Fri, 9.30 am to 4.30 pm
- > Open for advertised shows (one hour prior to show times) and special events.



20 Mawarra St, Kingston

- > Open Thu to Sat, 10.30 am to 4 pm
- > Open for advertised special events.
- > FREE entry



270 Jacaranda Ave, Kingston

- > Open Tue to Sat, 10 am to 4 pm
- > Closed Sun and public holidays
- > Open for advertised markets, shows and special events.



Located inside the Kingston Butter Factory building

- > Open Tue to Sat, 10 am to 4 pm
- > FREE entry

Contact Us

Logan Art Gallery

- ☎ **07 3412 5519**
- ✉ **artgallery@logan.qld.gov.au**
- **loganarts.com.au/artgallery**
- 📷 **instagram.com/loganartgallery**

Logan Entertainment Centre

- ☎ **07 3412 5626**
- ✉ **entertainment@logan.qld.gov.au**
- **loganarts.com.au/LEC**
- 📘 **facebook.com/LoganEntertainmentCentre**
- 📷 **instagram.com/the_lec**

Mayes Cottage

- ☎ **07 3412 4147**
- ✉ **mayes@logan.qld.gov.au**
- **loganarts.com.au/Mayescottage**

Kingston Butter Factory

- ☎ **Box Office: 07 3412 5626**
- ✉ **kbfprecinct@logan.qld.gov.au**
- **loganarts.com.au/KBF**
- 📘 **facebook.com/kbfculturalprecinct**
- 📷 **instagram.com/kbfculturalprecinct**

Living Museum of Logan

- ☎ **07 2803 4724**
- ✉ **livingmuseum@logan.qld.gov.au**
- **loganarts.com.au/livingmuseum**

Logan Entertainment Centre, Kingston Butter Factory Cultural Precinct, Logan Art Gallery, Mayes Cottage and Logan Community Venues are owned and operated by Logan City Council, providing quality facilities for our community and visitors.

Every care has been taken to ensure the information in this brochure is correct at the time of printing. The presenters accept no responsibility for any errors, omissions or changes leading to inaccurate information, including cancellations or venue/time variations. Please confirm booking details with the box office or check online closer to the performance date.

Varying handling and credit card fees apply depending on method of booking. For more information refer to: **[Loganarts.com.au/ticketing-terms](https://loganarts.com.au/ticketing-terms)**